

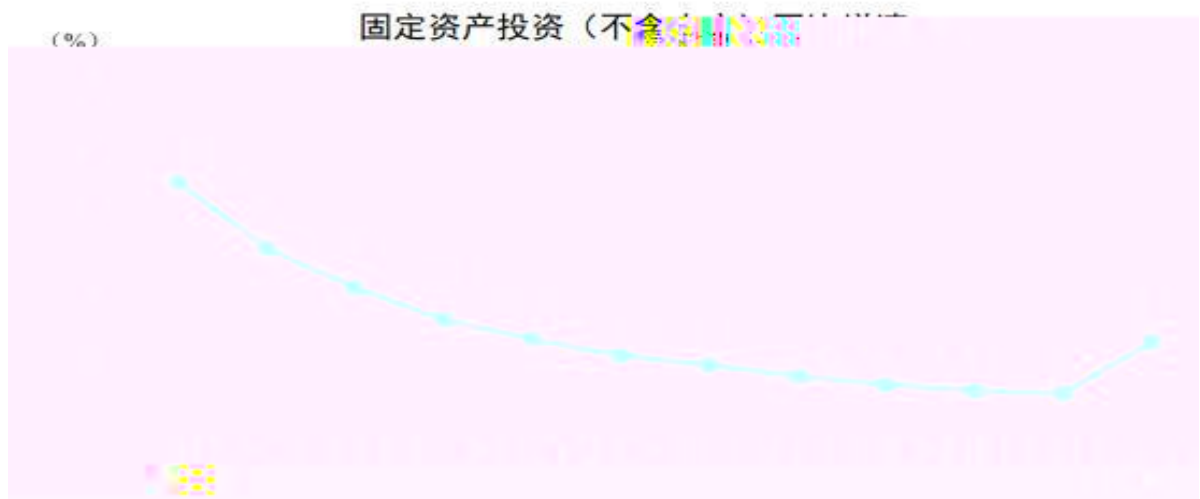
1.	2	2
2		3
3.		4
4.	" "	5
5.	REITS	5
6		6
7.		7
8	IMF	10

1.		2				
		3	15		1- 2	
1- 2					7.5%	2021
12	3.2		2021			1.4
			74426		6.7%	2021
12	5.0		2021			2.8
				50763		
12.2%	2021		7.3		2021	
	8.3		1- 2			62044
	13.3%				13.6%	
12.9%		1- 2				
					"	
					"	
					1- 2	
						2021
			2		"	"
	"	"			"	"
			2021	1- 2		
30%					1- 2	

1- 2  
 13.3%  
 13.6%  
 12.9%  
 8- 9  
 1- 2  
 2  
 1- 2  
 7.5%  
 2  
 0.34%  
 1- 2  
 9.8%  
 7.3%  
 6.8%  
 1- 2  
 5.9%  
 8.4%  
 4.2%  
 8.7%  
 1- 2  
 41  
 38  
 11.1%  
 6.3%  
 6.5%  
 15.4%  
 4.9%  
 5.9%  
 1.3%  
 2.9%  
 4.4%  
 5.0%  
 8.8%  
 7.2%  
 4.2%  
 13.6%  
 12.7%  
 6.0%

3.

	3	15	1-2	
		50763		12.2%
	29176		11.4%	2
			0.66%	
1129		8.8%	14580	
19.6%		35055	9.5%	
	19.8%		21.1%	
20.9%				11.7%
	8.1%		22.5%	
	4.3%		8.2%	
	8.0%		11.7%	
	14.7%		13.2%	
18.6%				12.3%
	8.3%		13.3%	



4.

2021 12

" " " "

6

" "

2021 8

5- 10

" "

11

2025

3

GDP

43%

"

" 7

" "

"

2.0'

5.

REITS

6

21

REITS

WIND

11

REITS

20%

REIT

50%

REITS

REITS

" "

REITS

REITS

REITS

REITS

REITS

REITS

REITS

IRR

4%

2 16

IRR

0

REITS

ABS

REITS

REITS

REITS

REITS

REITS

6.

" "

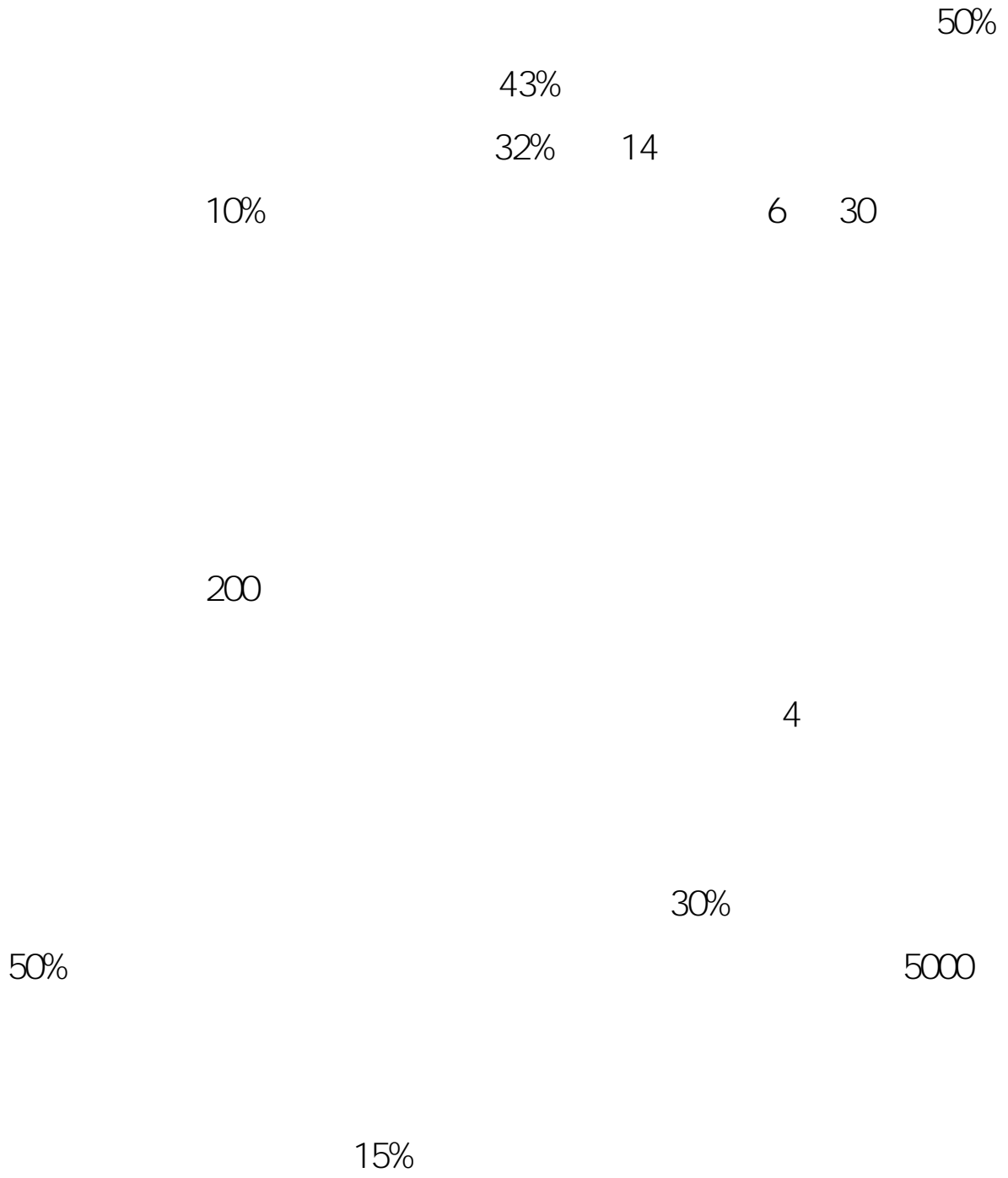
67%

1.4

2

		2021	
28.21	2021		1.214
	4.3%	1800	
7550		9.7%	1500
2021		7380	2.62%
2021		800	3300
	4200		3.5%
			2021
	2.06		3500
		16.9%	
	2400		11.6%
	28%		18.6%
	80%		







8.

IMF

IMF

3

13

" "

" "

	"	"	"
	1200		
"			IMF
2022		4.4%	

